

# Alkham, Capel-le-ferne & Hougham newsletter



## Kent Police

Get the latest crime statistics by visiting: [www.kent.police.uk/yourarea](http://www.kent.police.uk/yourarea)

March 2025

## Community events attended and next month's events in surgery.

Hello all and welcome to April and the sun is finally out and hopefully here to stay.

I can't quite believe how quickly this year is going and I hope you are all looking forward to the easter celebrations.

The month of March saw 34 calls made to Kent Police in the Alkham, Capel and Hougham area.

Just a little something that we have been sent from trading standards,

Recent research shows that two out of three elderly people were targeted by scammers leaving many frightened and depressed.

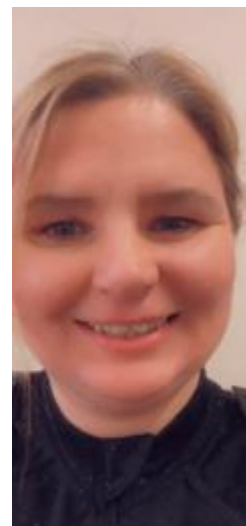
Please see the below links which may assist the community.

[How to say no to doorstep crime - Kent County Council](#)

FREE No Cold Callers sticker [Kent County Council Public Protection](#)

I remind everyone to ensure that they report incidents to the police through the correct channels. Please call 999 in an emergency if a serious offence is in progress, someone is in immediate danger or risk of harm or property is being damaged. You should call 101 or report online.

My kind regards in advance  
PC 12179 Cheryl ELLIS



Find out what's happening in your area

Receive alerts from your local officers

Tell us what matters most to you

Sign up today and make your voice count

MCV is a two-way engagement tool brought to you by Kent Police

[mycommunityvoicekent.co.uk](http://mycommunityvoicekent.co.uk)

# Alkham, Capel-le-ferne & Hougham newsletter



## Kent Police

Get the latest crime statistics by visiting: [www.kent.police.uk/yourarea](http://www.kent.police.uk/yourarea)

March 2025

### Statistics for Alkham, Capel and Hougham

March saw 34 calls to Kent Police

#### Incidents of Notes

On Sunday 2/3/25

Police received a report that there are about 10 bikes being ridden on the field and around the area of Ewell Minnis and are going fast when approaching anyone in the area.

This is an area where this is a regular occurrence, Police are aware and when we catch them the riders will be issued with a section 59 warning, if they fail to adhere to this then the bike can be seized.

I am pleased to say that Last month I was able to go out with two of my colleagues and conducted speed checks along Alkham Valley, 6 drivers were caught doing over 50MPH and were all issued with a speeding ticket, we also gave words of advice to several other drivers who were just over. This will be a regular event.

### Drop-in surgery

- 1<sup>st</sup>/ 15<sup>th</sup> and 29<sup>th</sup>
- Caple Village Hall

Your local officer is Police  
Community Support Officer

**Name here**



Find out what's happening in your area



Receive alerts from your local officers

Tell us what matters most to you



Sign up today and make your voice count



MCV is a two-way  
engagement tool  
brought to you by  
Kent Police

[mycommunityvoicekent.co.uk](http://mycommunityvoicekent.co.uk)

# Alkham, Capel-le-ferne & Hougham newsletter



## Kent Police

Get the latest crime statistics by visiting: [www.kent.police.uk/yourarea](http://www.kent.police.uk/yourarea)

March 2025



If you need work done on your home or garden, please choose a safe, local trader from the Trading Standards Checked scheme. Be sure to look out for others and report anything you see to Kent Police. You can also report 100% anonymously to Crimestoppers on 0800 555 111.

Examples of door-to-door scams Most door-to-door scams involve selling goods or services that are either not delivered or are very poor quality. You won't get value for money, and you may get billed for work you didn't want or agree to.

Some scammers conduct surveys just to get your personal details or as a cover to sell you goods or services you don't want or need, such as roofing work or patio replacement.

Unscrupulous employees sometimes still act illegally even when selling a genuine product by a genuine business. If someone knocks at your front door claiming to be from a company, first check their ID.

If you're not happy, don't let them in. Never call the phone number on their ID card to check them out. Ask the salesperson to wait outside, shut the door and find the company number on the internet.



Find out what's happening in your area

Receive alerts from your local officers

Tell us what matters most to you

Sign up today and make your voice count

MCV is a two-way engagement tool brought to you by Kent Police

[mycommunityvoicekent.co.uk](http://mycommunityvoicekent.co.uk)



# Alkham, Capel-le-ferne & Hougham newsletter



## Kent Police

Get the latest crime statistics by visiting: [www.kent.police.uk/yourarea](http://www.kent.police.uk/yourarea)

March 2025

understand Electric Scooters – know the law.

### Electric Scooters – know the law



Although e-scooters can be great fun, it's against the law to ride one on a public road, cycle lane or pavement. Please share this information with friends and family. E-scooters are classed as Personal Light Electric Vehicles (PLEVs), which means they are treated as motor.

vehicles and subject to the same legal requirements, such as driving licence, insurance, number plates, lighting, road tax, crash helmets etc. Without these, e-scooters cannot be used legally on the road.

The Government is currently trialling the use of approved rental e-scooters as environmentally friendly modes of transport in some specific locations in the UK.

For the rest of the country, under current law, e-scooters can only be used on private land with the landowner's permission.

It's our priority to keep you and other road users safe.

We are obliged to act against anyone who is caught repeatedly using an e-scooter illegally or in a way that causes a nuisance to others. In these circumstances we have the power to seize the e-scooter under Section 59 of the Police Reform Act/165 of the Road Traffic Act – and we'd really prefer not to.

For more information about powered transporters and the law, [www.gov.uk](http://www.gov.uk)



**My Community Voice**  
Protecting the neighbourhoods of Kent and Medway

Find out what's happening in your area

Receive alerts from your local officers

Tell us what matters most to you

Sign up today and make your voice count

MCV is a two-way engagement tool brought to you by Kent Police

[mycommunityvoicekent.co.uk](http://mycommunityvoicekent.co.uk)

# Alkham, Capel-le-ferne & Hougham newsletter



## Kent Police

Get the latest crime statistics by visiting: [www.kent.police.uk/yourarea](http://www.kent.police.uk/yourarea)

March 2025



Prevent theft from a vehicle.

We have recently received reports of theft from a motor vehicle Dover and Deal. Having your car broken into and losing your things to thieves can be very distressing. There are a few simple steps you can take to keep your vehicle, and what's in it, safe.

Ensuring your vehicle is secured and valuables removed will prevent and deter opportunistic thieves.

Don't hide valuables in the boot or glove compartment. These are the first places a thief will look.

Consider purchasing a Faraday bag to store your vehicle keys.

Visit the Kent Police website Prevent theft from a vehicle | Crime Prevention | Kent Police



Find out what's happening in your area

Receive alerts from your local officers

Tell us what matters most to you

Sign up today and make your voice count

MCV is a two-way engagement tool brought to you by Kent Police

[mycommunityvoicekent.co.uk](http://mycommunityvoicekent.co.uk)

# Alkham, Capel-le-ferne & Hougham newsletter



## Kent Police

Get the latest crime statistics by visiting: [www.kent.police.uk/yourarea](http://www.kent.police.uk/yourarea)

March 2025

### What is StreetSafe?

As part of the government's agenda to tackle violence against women and girls, we are using a new online.


tool called Street Safe to enable people, particularly women and girls, to report locations where they feel or

have felt unsafe and to identify the features on why that location made them feel unsafe.

The focus of this is to identify areas and factors that lead to people feeling unsafe and might help.

offenders either commit or conceal a crime – such as street lighting, abandoned buildings or poorly designed spaces, vandalism, as well as behaviours of individuals or groups of people.

StreetSafe is anonymous StreetSafe | Police.uk ([www.police.uk](http://www.police.uk)).



**My Community Voice**  
Protecting the neighbourhoods of Kent and Medway

**Find out what's happening in your area**

**Receive alerts from your local officers**

**Tell us what matters most to you**

**Sign up today and make your voice count**



MCV is a two-way engagement tool brought to you by Kent Police

[mycommunityvoicekent.co.uk](http://mycommunityvoicekent.co.uk)